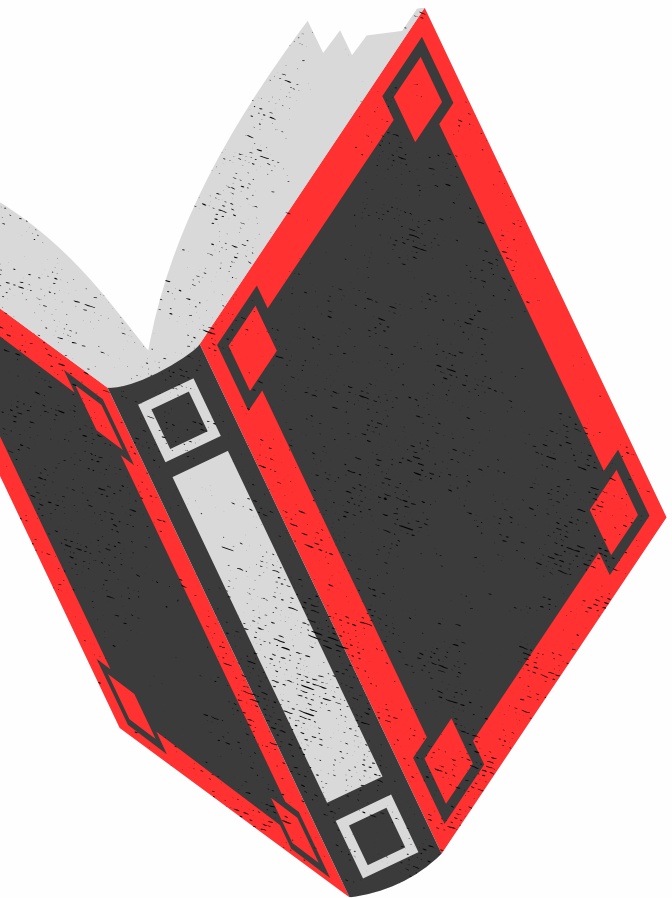




DUAL CREDIT PARENT INFO SESSION



SIGN IN HERE:



IMPORTANT CONTACTS:

Alice Hoy

Email: alice.hoy@gccisd.net

GCM College/Career Counselor

Jade Godoy

Email: jgodoy@lee.edu

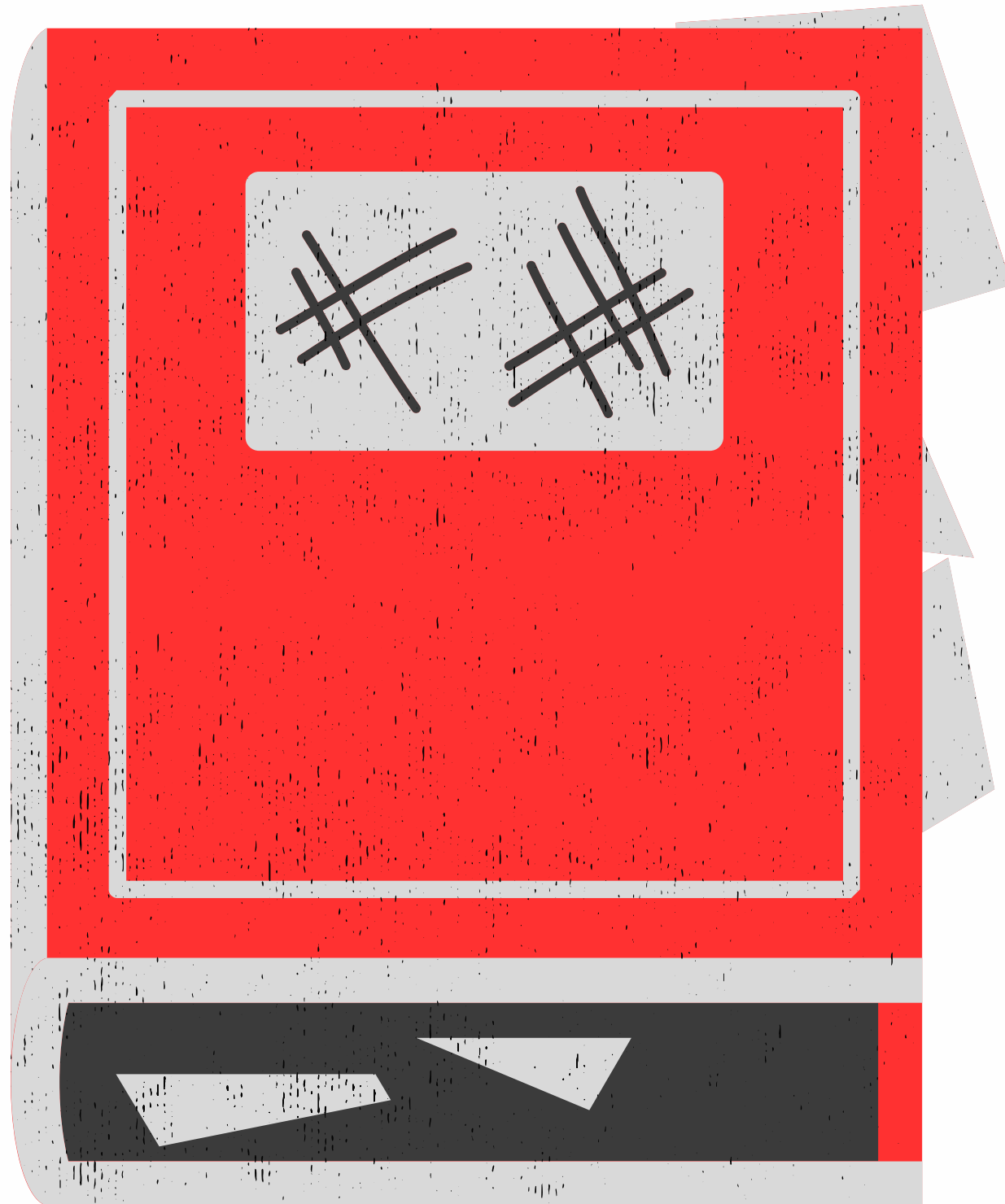
Office: 832-556-4039

Lee College Shared Advisor



WHAT IS DUAL CREDIT?

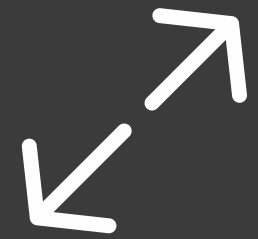
Dual credit is the process by which a high school student enrolls in a college course and receives simultaneous credit for the course from the college and the high school. This is a great way to get a jump start on your college credits!



BENEFITS:



Save money and time by earning college credit in high school



Expand academic and technical options while in High School



Learn what it takes to be successful in college



Build confidence by easing the transition to college



IS DUAL CREDIT RIGHT FOR YOU?

Parents and students should discuss goals, maturity, responsibility, academic ability, and level of commitment to future after high school. Considerer the following:



Are you interested in getting a degree in less time?



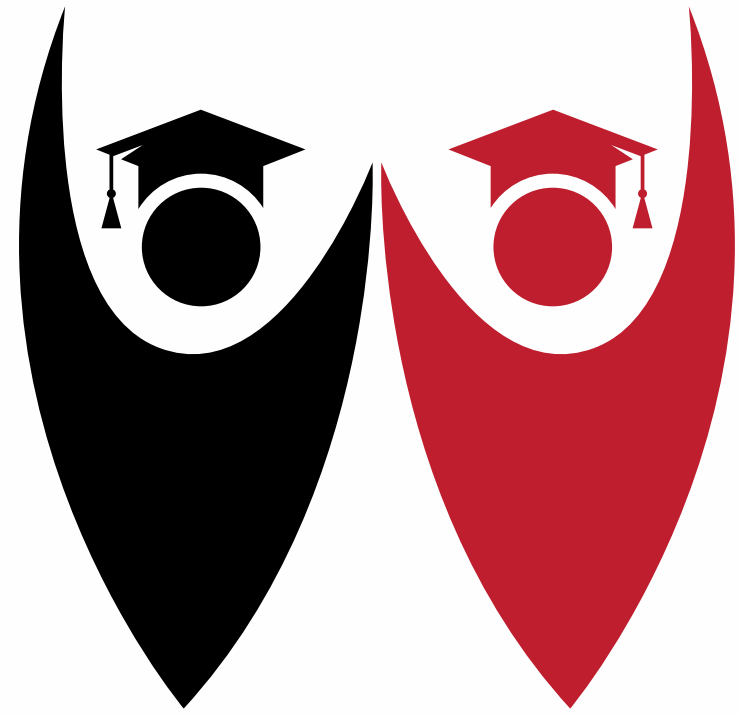
Do you feel prepared to take a college level course?



Do you have an idea of what you would like to do for a career?



Is money a reason you are not set on attending college?



Qualifying for Dual Credit

**Students will need to qualify for college placement through SAT/
TSI scores. Some courses may be exempt from this including
EDUC 1200, SPCH 1315, Fine Arts, and BCIS 1305.**

EXPECTATIONS:

What is expected of college students is vastly different from what is expected of high school students. You will be held to a higher standard and treated like a college student.

Time Commitment

Some classes will require more study time and will require you to do work outside of regular school hours. Estimate 2-3 Hours Per Hour of class time for studying.

Academic Responsibility

Grades earned through dual credit are weighted at the high school level and become part of your permanent college transcript which may impact your eligibility for financial aid, scholarships, and admission to some schools or programs.

Time Management

Most professors do not accept late work and it is your responsibility to meet deadlines. Don't wait until the day before an assignment is due to start it and utilize your calendar to set reminders!

Academic Honesty

You are held to the same standard as other college students and must abide by the colleges academic honesty policies. (Ex. follow proper testing protocols, no using chat GBT or other AI sites, no plagiarism)

Self Accountability

You are the one responsible for your performance in the class. Stay in contact with your instructor and check your college email/ log into blackboard daily. If you don't understand something you need to ask for help.

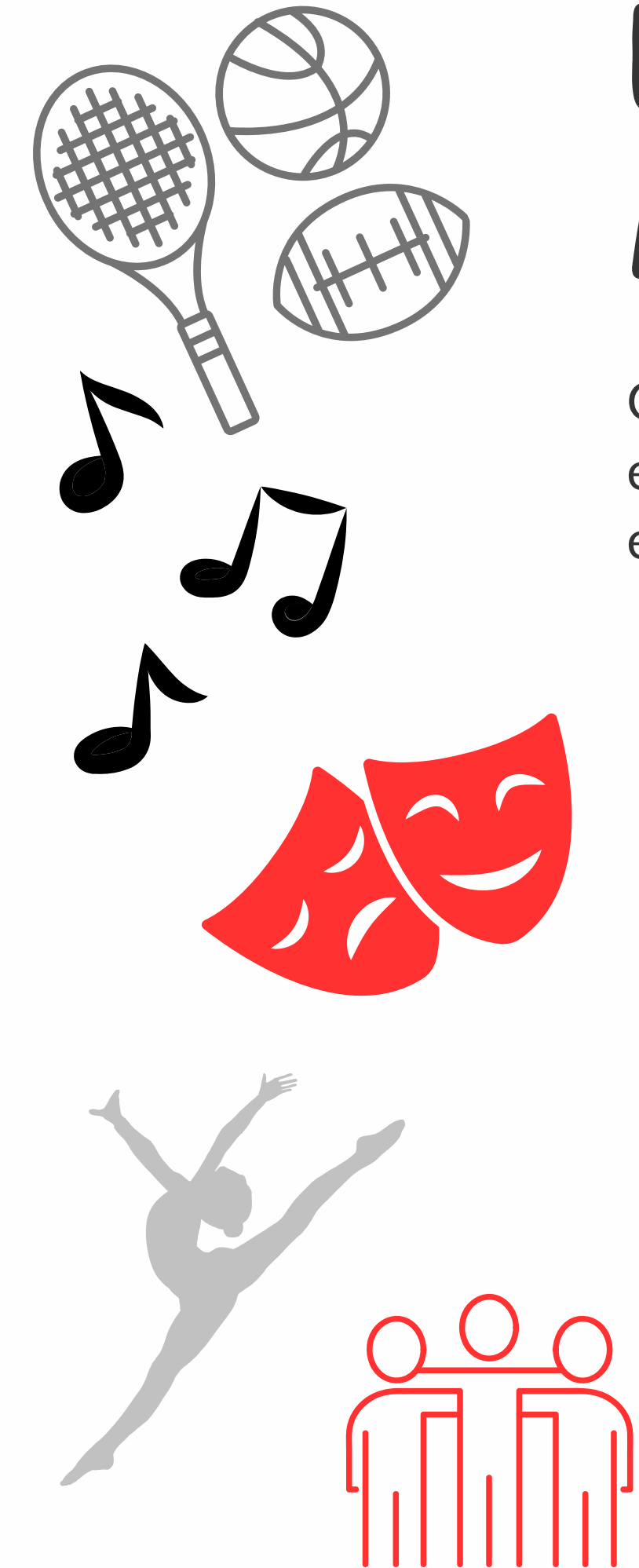
Attendance

If you will need to miss a class for any reason it is your responsibility to notify your professor and make arrangements regarding missed assignments or information. *An excused absence in high school does not mean excused on the college side.

EXTRA-CURRICULAR ACTIVITIES AND ELIGIBILITY

GCCISD believes having a well-rounded education is in the best interest of the student and encourages participation in extra-curricular activities such as athletics, fine arts, student clubs, etc.

- Keep in mind that Dual credit courses **DO** count toward eligibility including UIL eligibility.
- Students need to be aware of grades at all times. Students and parents may check grades in Blackboard.
- Parents and students should consider the workload and time commitments required to be successful in the dual credit courses and balance their activities accordingly.
- The student is required to communicate with their professor in advance of any foreseeable absence due to a high school extra-curricular event and to coordinate with their professor the completion of any required assignment or assessment.



ACADEMIC STATUS

Academic Warning

Student did not maintain a term GPA of 2.0 or higher for 2 consecutive semesters.
or student cumulative GPA falls below 2.0.

- Mandatory advising session prior to enrollment in future courses
- Mandatory limit enrollment to 1-2 courses
- Can retake failed course(s) during summer to improve academic standing

Academic Suspension

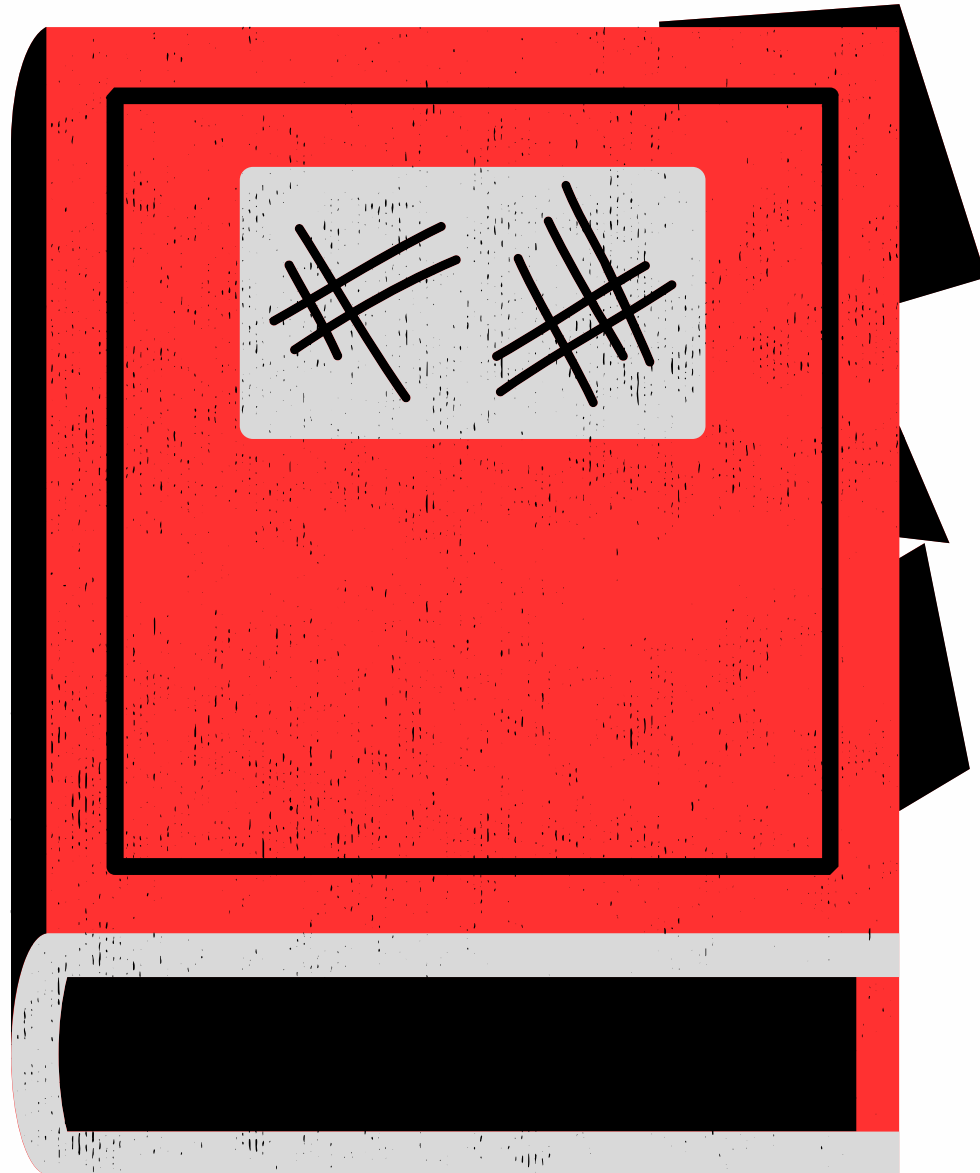
Student did not maintain a term GPA of 2.0 or higher while on Academic Warning.

- Mandatory advising session prior to enrollment in future courses
- Mandatory limit enrollment to 1-2 courses
- Can retake failed course(s) during summer to improve academic standing

If you decide to retake a dropped/failed course you will need to pay \$165 out of pocket.



CONSEQUENCES OF DROPPING A DUAL CREDIT COURSE



- Withdrawals after the allowed drop period remain on the college transcript
- Can affect your ability to be core complete or get your associates
- May affect your financial aid in the future
- Will lose your payment if dropped after class starts
- You will have to pay \$165 if you wish to retake the course and \$380 if you repeat it a third time
- Students who wish to drop **MUST** be counseled by college/career counselor or Lee College shared advisor **PRIOR** to dropping course

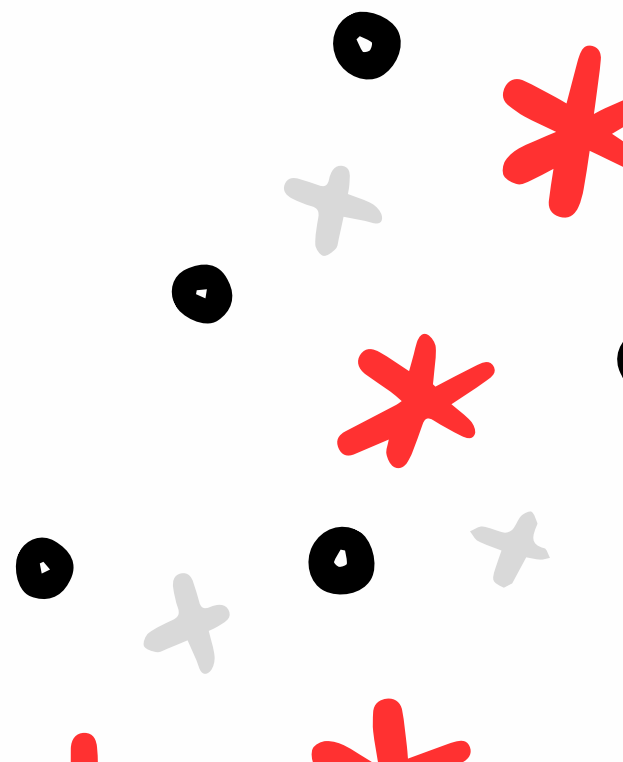
TYPES OF DUAL CREDIT

Academic

- Transfers to four-year institutions
- Examples of subject areas include: the arts, English, history, mathematics, and the sciences.
- Earn an associates degree or earn credits to transfer

Technical

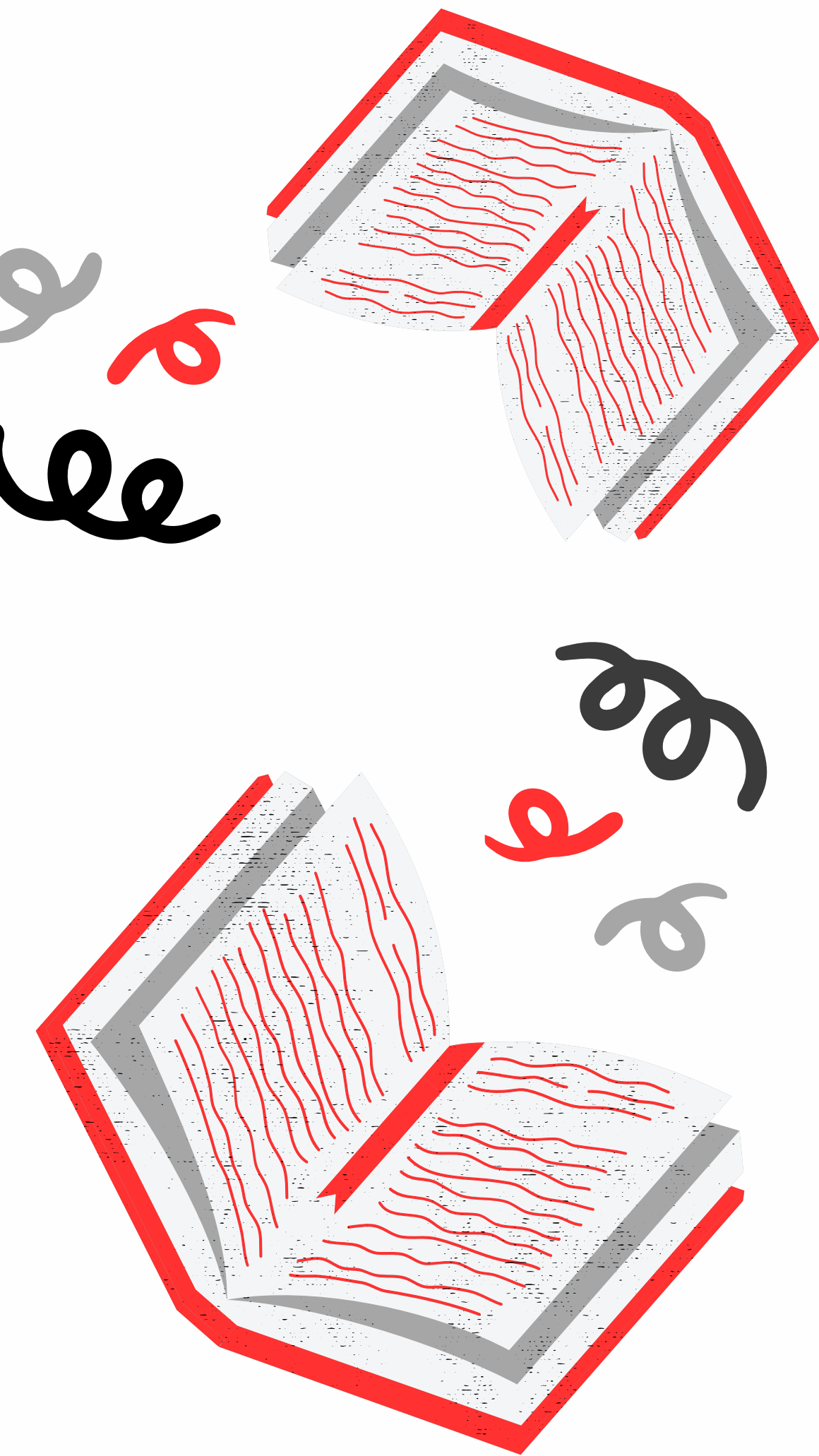
- May or may not transfer to four-year institutions
- Students taking these courses often plan to enroll in a certificate or two-year degree program
- Can help students enter the workforce after high school graduation
- Earn an industry-based certification



COURSE OPTIONS AT GCM

- **Lee College Dual Credit**

- Dual credit classes are offered on the GCMHS campus or online.
- Classes may be taught by a college professor or by an adjunct professor who is also a GCMHS teacher
- Some of these include: English, biology, government, U.S. history, psychology, and speech
- All classes will be in a student's regular seven period schedule. Classes that are online will be taught by a Lee College professor and proctored by a GCMHS staff member
- The number of courses transferable may differ by college and degree plan and students should plan to meet with the Dual Credit advisor before enrollment to make sure that the intended classes are within their intended college major





Associate degree vs core complete

COLLEGE CREDIT TRANSFERABILITY

- In most cases, the course taken through GCCISD dual credit program (academic only, not career and technical courses) are transferable to other public Texas colleges and universities.
- The number of courses transferable may differ by college and degree plan.
- Texas law mandates that students who take and complete the core courses (core complete) at one Texas public school will be able to transfer as core complete to another institution of higher education.
- Students are encouraged to talk to an advisor of the college / university they plan to attend to find out what courses will or will not transfer.



HOW TO CHECK IF A CLASS TRANSFERS:

Undergraduate Admissions

[Discover & Connect](#) ▾ [Visit](#) ▾ [Apply](#) ▾ [Pay for College](#) [Make It Official](#) ▾ [Resources](#) ▾ [Contact Us](#) ▾

[UH Home](#) > [Admissions](#) > [Apply](#) > [Transfer Students](#) > [Transfer Equivalency Guides](#)

APPLY

[Freshman Students](#)

[Transfer Students](#)

[Transfer Equivalency Guides](#)

[Transfer Admissions Process](#)

[International Students](#)

[Former Students](#)

[Post-Baccalaureate Students](#)

[Visiting Students](#)

Transfer Equivalency Guides by Major

The guides below are a reference for students who have attended other colleges and universities. The courses listed in each guide **are not requirements** for admission to the University of Houston. Instead, they show how courses taken at other colleges or universities would transfer to UH as credit.

Gerald D. Hines College of Architecture

 [Architecture](#) 06/2021

 [Environmental Design](#) 06/2021

 [Industrial Design](#) 06/2021



IMPLEMENTATION FOR 9TH GRADE

- All 9th grade students will take MAPS, AVID, and JROTC during the fall semester.
- 9th grade students will take their first dual credit course in the SPRING semester- EDUC 1200- Learning Pathway
- College applications and other required documents will be completed in the fall semester class
- Deadline for \$50 payments is due to the Patriot Center by Friday, August 16



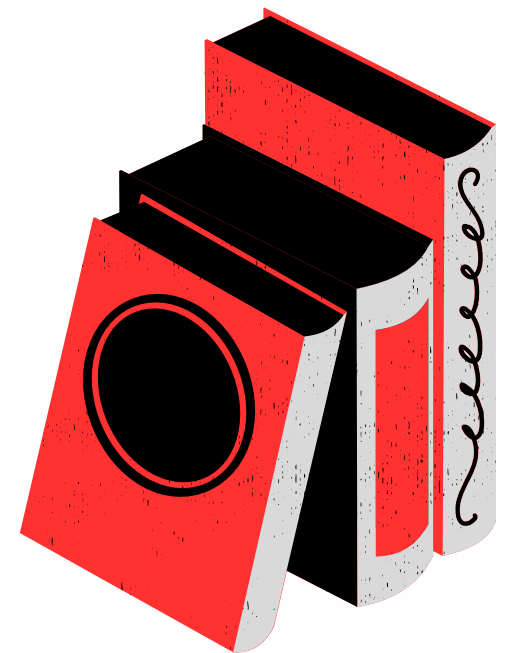
IMPLEMENTATION FOR 10TH, 11TH, 12TH GRADES

- All students NEW to dual credit MUST take EDUC 1200 as their first dual credit course.
- 10th grade students new to dual credit will take EDUC 1200 in the fall and may take other courses in the spring.
- 11th and 12th grade students NEW to dual credit can take EDUC 1200 concurrently with other courses in their plan.
- Deadline for \$50 payments is due to the Patriot Center by August 16

FERPA

Family Educational Rights & Privacy Act

- Federal law that protects the privacy of student educational records.
- When a student turns 18 years old or enrolls in an institution of higher learning at any age, FERPA transfers rights to the student.
- FERPA applies to dual credit students and their information cannot be disclosed. This includes but is not limited to: grades, course schedules, test scores, account balances.
- This is an opportunity for students to learn the college process and take on new responsibilities by keeping their parents informed of their academic progress.
- FERPA Form must be signed **BY THE STUDENT** if a parent wants access to student grades and other college information.
- Authorization is good for ONE year.
- Parents may speak with high school personnel regarding student progress in college courses. Parents may not contact college professors.



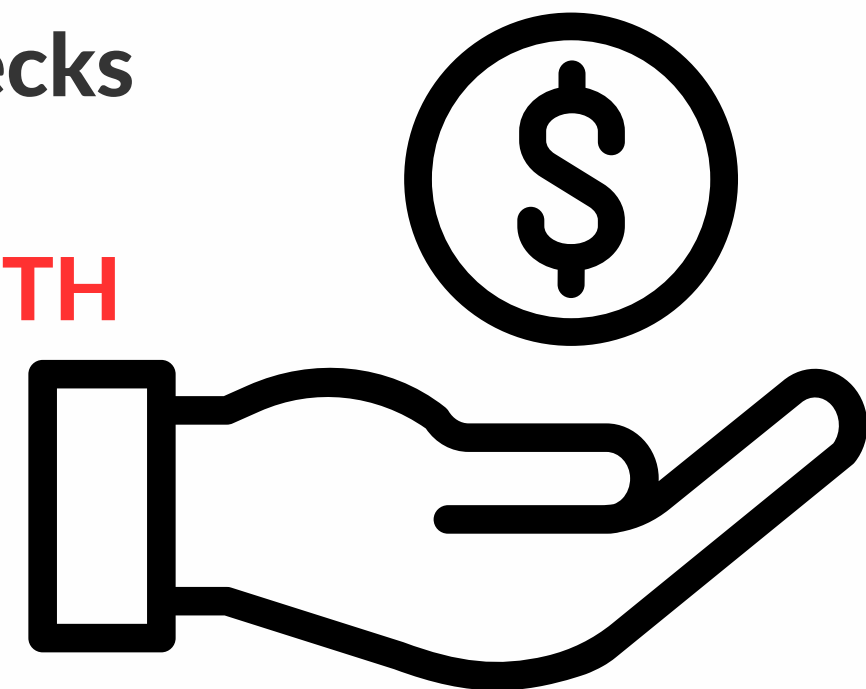
PAYMENT

**\$50 for all courses per school year unless you qualify for FAST
Summer courses are \$165 each unless you qualify for FAST
GCCISD pays the remaining tuition cost.
GCCISD pays the cost of books.**

**Tuition payments are made to the
Patriot Center for College and Career Readiness.**

**CASH OR CHECK ONLY
Please write DL number on checks**

PAYMENTS DUE: AUGUST 16TH



Directions for logging into accounts, email, and other information for **Lee College is on the dual credit website.**



<https://schools.gccisd.net/page/gcmhs.collegeandcareer>

LEE COLLEGE RESOURCES

Pick up a student ID on the second floor of Rundell Hall to utilize these resources!

Technical Help Desk
281-425-6952

Library

- Laptop checkout
- Books and Ebooks
- Movies
- Research Materials

Writing Center and Tutors
wconline@lee.edu
Call for an appointment
281.425.6534

Testing Center

- TSI testing
- SAT and ACT
- leetesting@lee.edu

Employment and Career Services

- Job Fairs
- Employment Opportunities
- Resume Help

Resource and Advocacy Center

- SRAC Market
- Clothing Closet
- Transportation Request

ACCESSIBILITY SERVICES & ACCOMMODATIONS

Accommodations are not the same between high school and college. Individuals needing services/accommodations should meet with the counselor for students with disabilities at Lee College to request any assistance or accommodations.

Students can apply for accommodations at any time, but accommodations are not retroactive, so please apply before the start of EACH semester

Contact **Disability Services** at disability@lee.edu

Counselor for Students with Disabilities:

K-leigh Villanueva

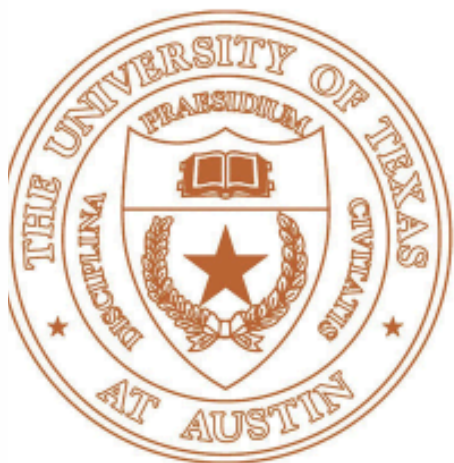
kvillanueva@lee.edu

832.556.4069



OnRamps Dual Enrollment through UT Austin and Tarleton

Each OnRamps dual enrollment course is modeled after one that is offered in-residence to students at The University of Texas at Austin or at Tarleton State University. The courses adhere to the same standards of quality, depth, and complexity as those taught on the college campuses.



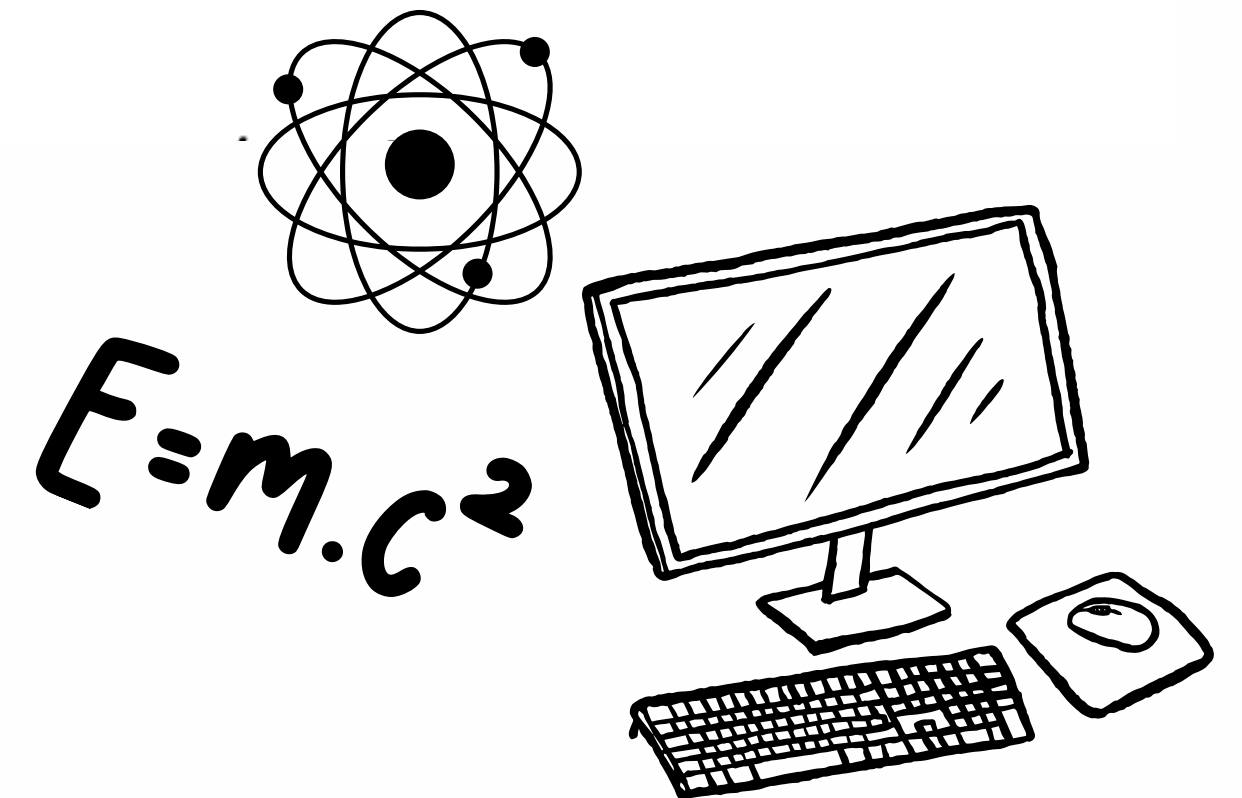
2024-25 OnRamps Courses at GCM

OnRamps Chemistry, grades 10-12

OnRamps Computer Science, grades 11-12

OnRamps Physics I, grades 11-12

- GCM grades will be in teams
- College grades will be in Canvas (college information system program)
- Students will pay \$50





General OnRamps Information

- **OnRamps courses do not require admission to the university but are aligned with courses taught to UT Austin's residential students.**
- **A university faculty member serves as the Instructor of Record and evaluates students' progress in each college course. A GCM teacher serves as the high school teacher of record.**
- **Students will receive 2 different grades – college and high school**
- **Enrollment in an OnRamps course does not require college placement testing**
- **Students can choose to accept the college credit at end of the course or just take the high school credit**
- **Students receive weighted GPA points for GCM, 6.0 scale**

Lamar Institute of Technology

Criminal Justice Courses taken at GCM Campus

Taught by GCM teacher, Mr. Laird, who is also an instructor for LIT

Grades will be in TEAMS


College grades will be in LIT Blackboard

Parents will need to check student's Blackboard for most up-to-date grades

Students are working to earn a certification

Some courses may transfer into a criminal justice program at a 2-year or 4-year

Students will pay \$50 for the tuition and textbooks



ADDiTiONAL REMiNDERS

- Students who take dual courses are considered FRESHMEN when applying to college after graduation – NOT transfer students. This includes students earning an associate degree. Dual students ARE eligible for first-time freshmen scholarships.
- Students who take ON RAMPS or LIT courses that need to be considered in their degree plan MUST submit a transcript to Lee College from UT Austin or LIT by beginning of spring semester before graduation.
- Tonight's PPT to be posted on website
- Students will be reviewing this information on August 23rd during 2nd period

JOIN THE PATRIOT CENTER'S GOOGLE CLASSROOM



Class Code
gwbdrf6

IN OUR GOOGLE CLASSROOM YOU WILL
LEARN ABOUT:

UPCOMING SCHOLARSHIP OFFERS
TESTING DATES
MEETING DATES



ALICE HOY
College & Career
Counselor



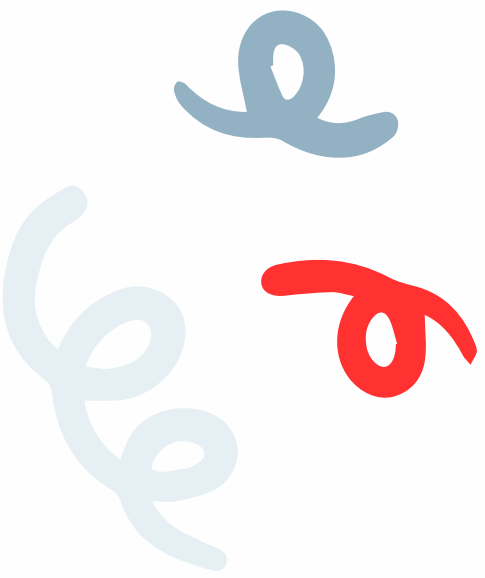
LYNN STATON
College and Career
Clerk



JADE GODOY
Lee College Shared
Dual Credit Advisor



AMANDA LAVENDER
Lee College Shared
College Coordinator



THANK YOU FOR ATTENDING!

Alice Hoy

alice.hoy@gccisd.net

GCM College/Career Counselor

Jade Godoy

Email: jgodoy@lee.edu

Office: 832-556-4039

Lee College Shared Advisor

SIGN IN HERE:

